

MLS Area HU

Residential Statistics



August 2021

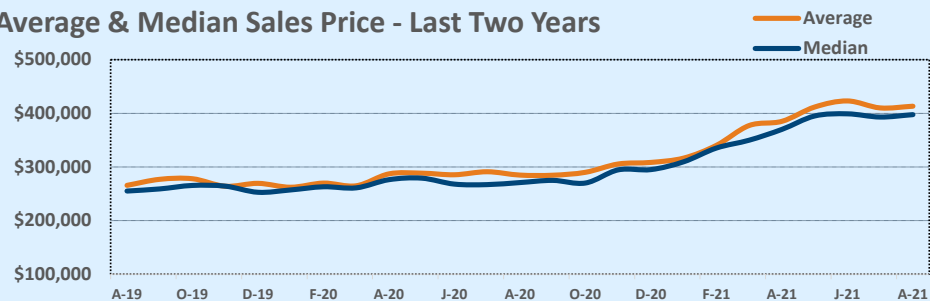
Listings	This Month			Year-to-Date		
	Aug 2021	Aug 2020	Change	2021	2020	Change
Single Family Sales	136	152	-10.5%	859	931	-7.7%
Condo/TH Sales	--	--	--	5	--	--
Total Sales	136	152	-10.5%	864	931	-7.2%
New Homes Only	6	14	-57.1%	52	113	-54.0%
Resale Only	130	138	-5.8%	812	818	-0.7%
Sales Volume	\$56,195,420	\$43,282,494	+29.8%	\$340,279,759	\$260,739,250	+30.5%
New Listings	147	117	+25.6%	1,151	944	+21.9%
Pending	52	139	-62.6%	152	1,017	-85.1%
Withdrawn	7	4	+75.0%	40	39	+2.6%
Expired	--	2	--	1	22	-95.5%
Months of Inventory	0.9	0.8	+14.7%	N/A	N/A	--

Price Range	This Month			Year-to-Date		
	New	Sales	DOM	New	Sales	DOM
\$149,999 or under	--	--	--	--	--	--
\$150,000- \$199,999	--	--	--	1	--	--
\$200,000- \$249,999	--	1	3	19	13	4
\$250,000- \$299,999	5	5	8	179	86	11
\$300,000- \$349,999	23	31	7	253	217	9
\$350,000- \$399,999	49	31	8	327	209	9
\$400,000- \$449,999	25	29	7	161	157	7
\$450,000- \$499,999	22	20	13	106	91	8
\$500,000- \$549,999	8	9	7	41	40	10
\$550,000- \$599,999	9	4	14	26	16	9
\$600,000- \$699,999	2	3	8	16	20	77
\$700,000- \$799,999	1	1	13	5	6	14
\$800,000- \$899,999	--	1	117	6	4	48
\$900,000- \$999,999	1	1	49	6	1	49
\$1M - \$1.99M	2	--	--	5	4	68
\$2M - \$2.99M	--	--	--	--	--	--
\$3M+	--	--	--	--	--	--
Totals	147	136	10	1,151	864	11

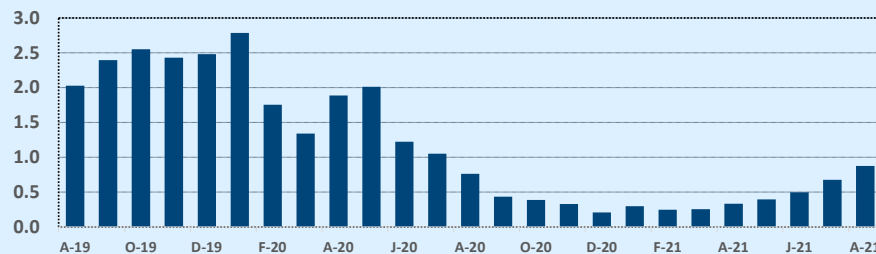
Average	This Month			Year-to-Date		
	Aug 2021	Aug 2020	Change	2021	2020	Change
List Price	\$394,412	\$285,320	+38.2%	\$363,876	\$282,232	+28.9%
List Price/SqFt	\$194	\$139	+39.8%	\$177	\$137	+29.8%
Sold Price	\$413,202	\$284,753	+45.1%	\$393,842	\$280,064	+40.6%
Sold Price/SqFt	\$203	\$138	+46.9%	\$192	\$136	+41.9%
Sold Price / Orig LP	104.9%	99.7%	+5.1%	109.4%	99.0%	+10.6%
Days on Market	10	38	-74.6%	11	48	-77.5%

Median	This Month			Year-to-Date		
	Aug 2021	Aug 2020	Change	2021	2020	Change
List Price	\$379,450	\$271,365	+39.8%	\$345,000	\$269,100	+28.2%
List Price/SqFt	\$192	\$137	+40.3%	\$173	\$135	+28.2%
Sold Price	\$397,500	\$270,825	+46.8%	\$375,000	\$267,365	+40.3%
Sold Price/SqFt	\$202	\$137	+47.7%	\$189	\$134	+41.4%
Sold Price / Orig LP	104.5%	100.0%	+4.5%	108.0%	100.0%	+8.0%
Days on Market	6	16	-61.3%	4	28	-85.7%

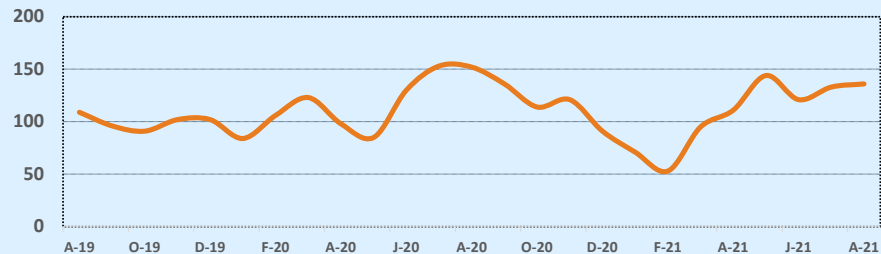
Average & Median Sales Price - Last Two Years



Months of Inventory - Last Two Years



Number of Sales - Last Two Years



Based on information from the Austin Board of REALTORS® (alternatively, from ACTRIS). Neither the Board nor ACTRIS guarantees or is in any way responsible for its accuracy. The Austin Board of REALTORS®, ACTRIS and their affiliates provide the MLS and all content therein "AS IS" and without any warranty, express or implied. Data maintained by the Board or ACTRIS may not reflect all real estate activity in the market.